

UBC Social, Ecological Economic Development Studies (SEEDS) Student Report

Redesign of MacMillian Courtyards

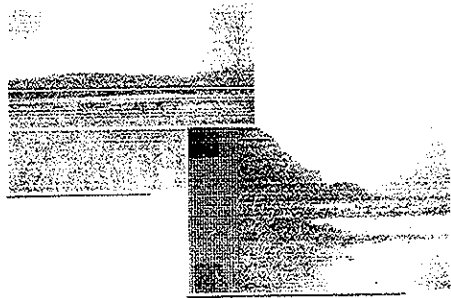
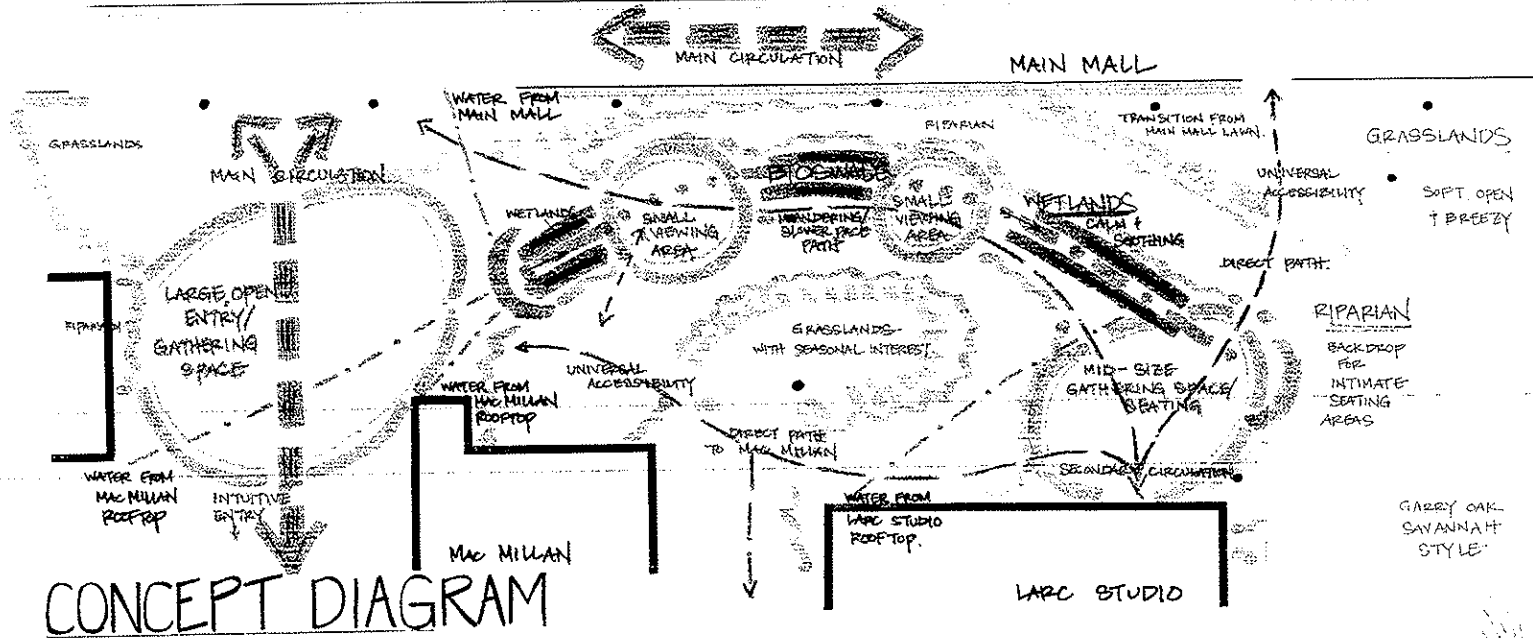
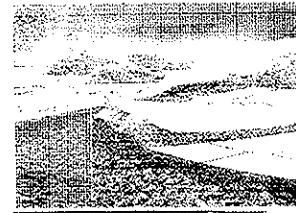
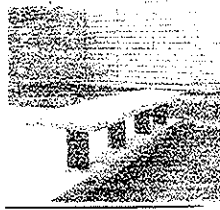
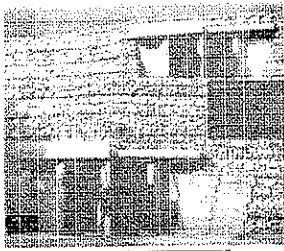
Robert Thor Haraldsson, Lisa Parker & Erin Upton

University of British Columbia

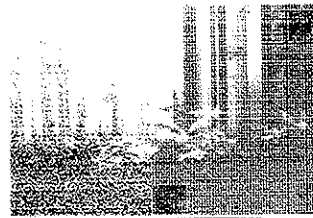
LARC 415

June 2005

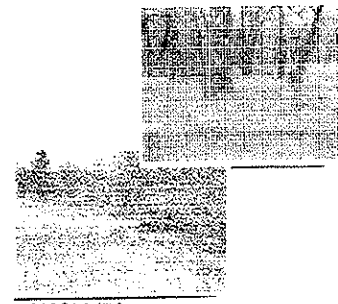
Disclaimer: "UBC SEEDS provides students with the opportunity to share the findings of their studies, as well as their opinions, conclusions and recommendations with the UBC community. The reader should bear in mind that this is a student project/report and is not an official document of UBC. Furthermore readers should bear in mind that these reports may not reflect the current status of activities at UBC. We urge you to contact the research persons mentioned in a report or the SEEDS Coordinator about the current status of the subject matter of a project/report."



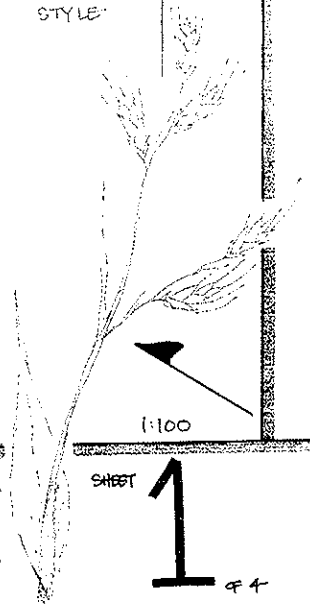
WETLANDS



RIPARIAN



GRASSLANDS



1:100

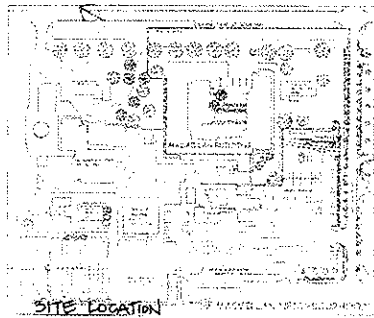
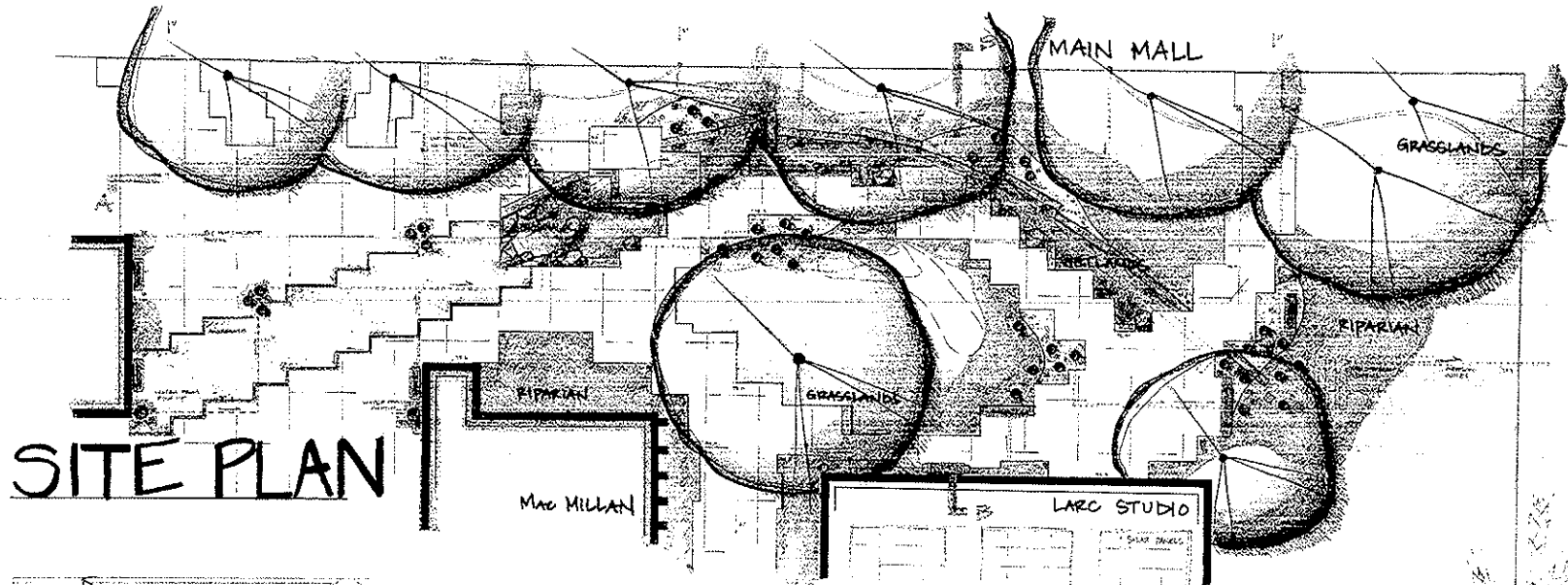
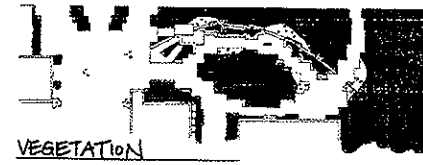
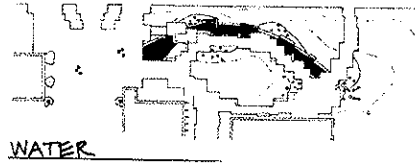
CAGED WATER

LISA PARKER
 MAC MILLAN BUILDING PROJECT
 LARC 502-GARDEN STUDIO
 FEBRUARY 21, 2005

SHEET

1

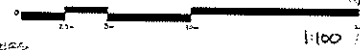
of 4



- WATER TRESS
 - 1.5m HEIGHT
 - 3.0m HEIGHT
 - 6.0m HEIGHT
- HDPE PIPE - 150mm
- CHANNEL DRAIN
- SURFACE DRAIN
- VALVE BOX
- ORANGE HDPE CISTERN
50cm x 3m

- BENCH - recycled plastic wicker
- LIGHT FIXTURE - 2m HEIGHT
RECYCLING SYSTEM
- PORCIN CONCRETE PAVING
30cm x 30cm
- AGGREGATE
- MOW STRIP (15cm wide)
FLYASH CONCRETE
- SOLAR PANELS

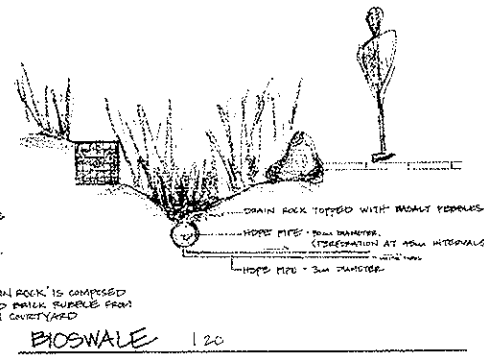
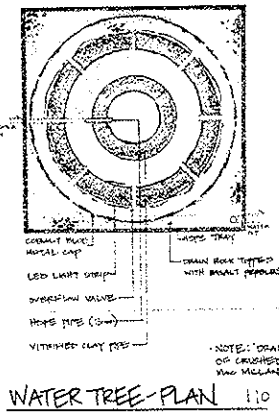
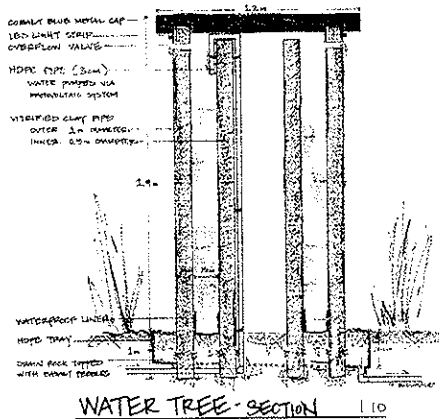
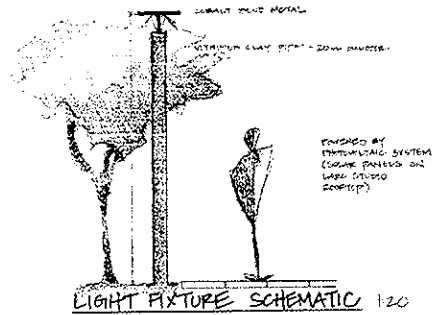
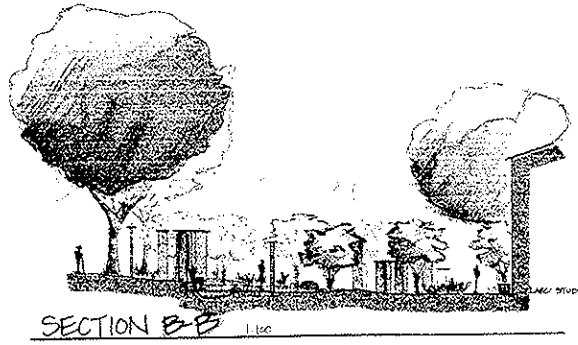
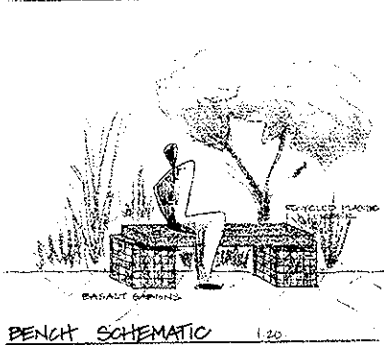
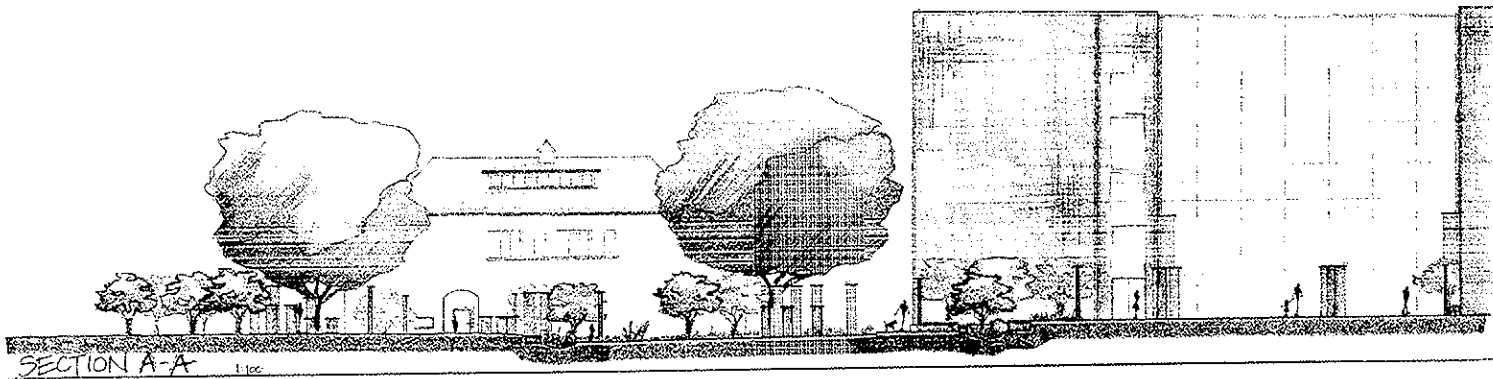
- BASALT BOULDERS
- SARINI RETAINING WALL (50cm HEIGHT)
FLYASH WITH BASALT
- BASALT FEPPLES
- TOPOGRAPHIC LINES
(10cm HORIZONTALS)



CAGED WATER

LISA PARKER
Mac MILLAN BUILDING PROJECT
LARC 502- GARDEN STUDIO
FEBRUARY 21, 2005

SHEET
2
OF 4

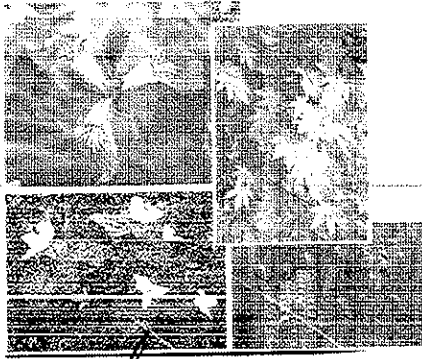


CAGED WATER

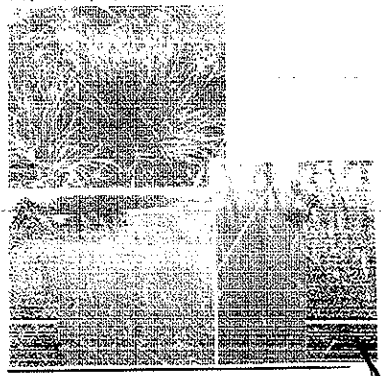
LISA PARKER
 MACMILLAN BUILDING PROJECT
 LARC 502 - GARDEN STUDIO
 FEBRUARY 21, 2005

SHEET 3 OF 4

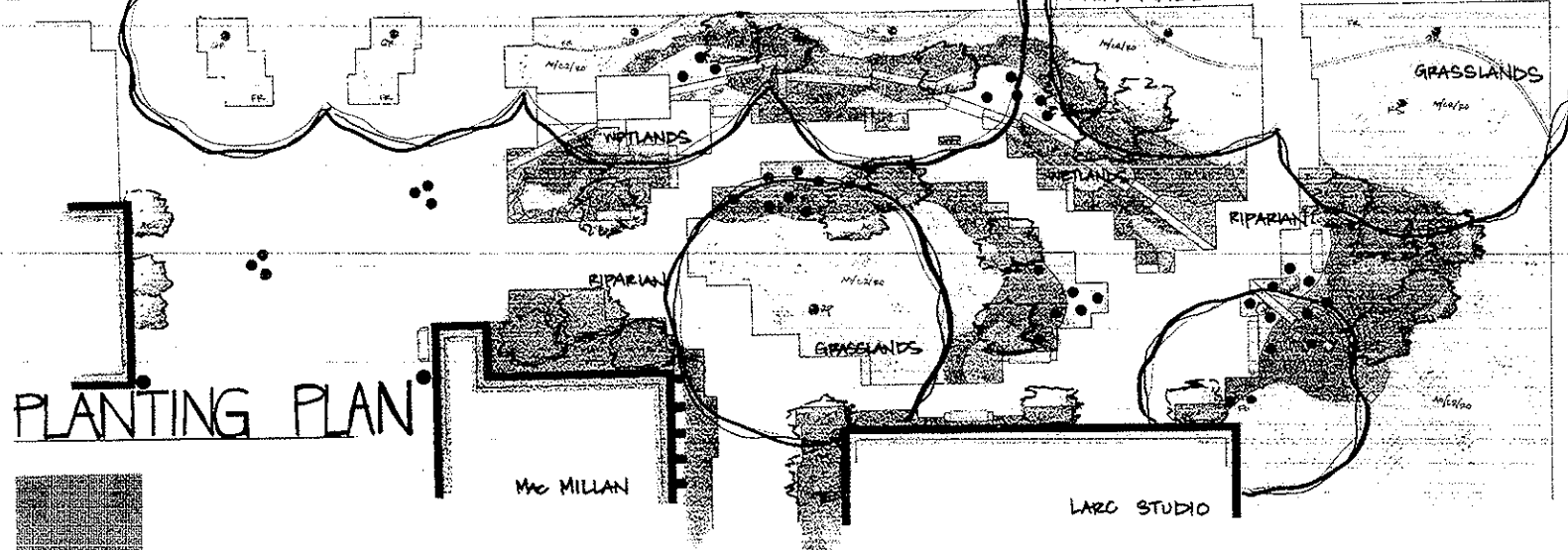
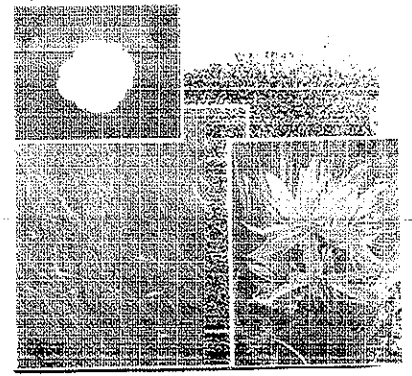
RIPARIAN



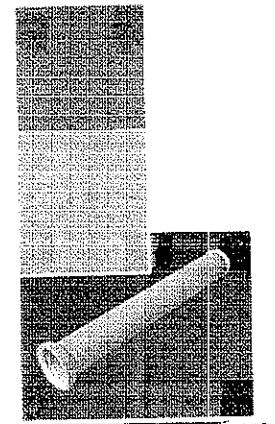
WETLANDS



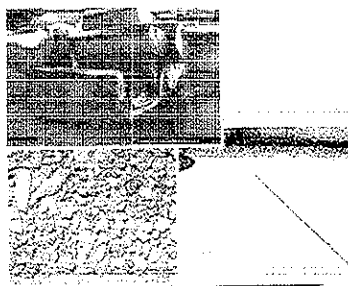
GRASSLANDS



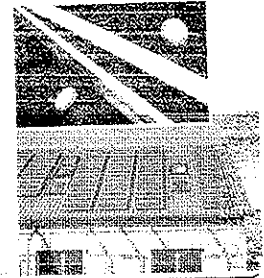
PLANTING PLAN



WATER TREES



HARDSCAPE



LIGHTING

PLANT SCHEDULE

PROPOSED	SELECTION	COMMON NAME
CA	ACEA CIRCINATUM	NINE HAPLES
TX	LEUCO TOXAR	OREGON LOG
TX	PHYLOGRUM MUNITUM	SHREDDED PERN
TX	TALLIUM OVATUM	WESTERN TRILLIUM
GRASSLANDS		
CA	ANTHROPOTHETUM OBOVATUM	SWEET VERNAL GRASS
CA	CAVASSIA QUINQUEFIDA	COMMON CANARY
TX	SMANDRILLUS RESIDENTIALIS	WESTERN BUTTERCUP
TX	FESTUCA RUBRA	RED PEARL
WETLANDS/BIOSPHERE		
CA	SAROLA ASHRA	BROWN SEDGE
TX	LEULIA MULTIFLORA	MANY-FLOWERED WOOD-ROSE
TX	PHILUSIA PRATENSIS	THIMBLE
EXISTING		
TX	SAROLA SYMMETICA	COMMON SEDGE
TX	SPRINKLING OAK	ELMORING ASH
TX	QUERCUS PALLIDIS	PIN OAK
TX	QUERCUS RUBRA	RED OAK



1:100

SHEET

4

OF 4

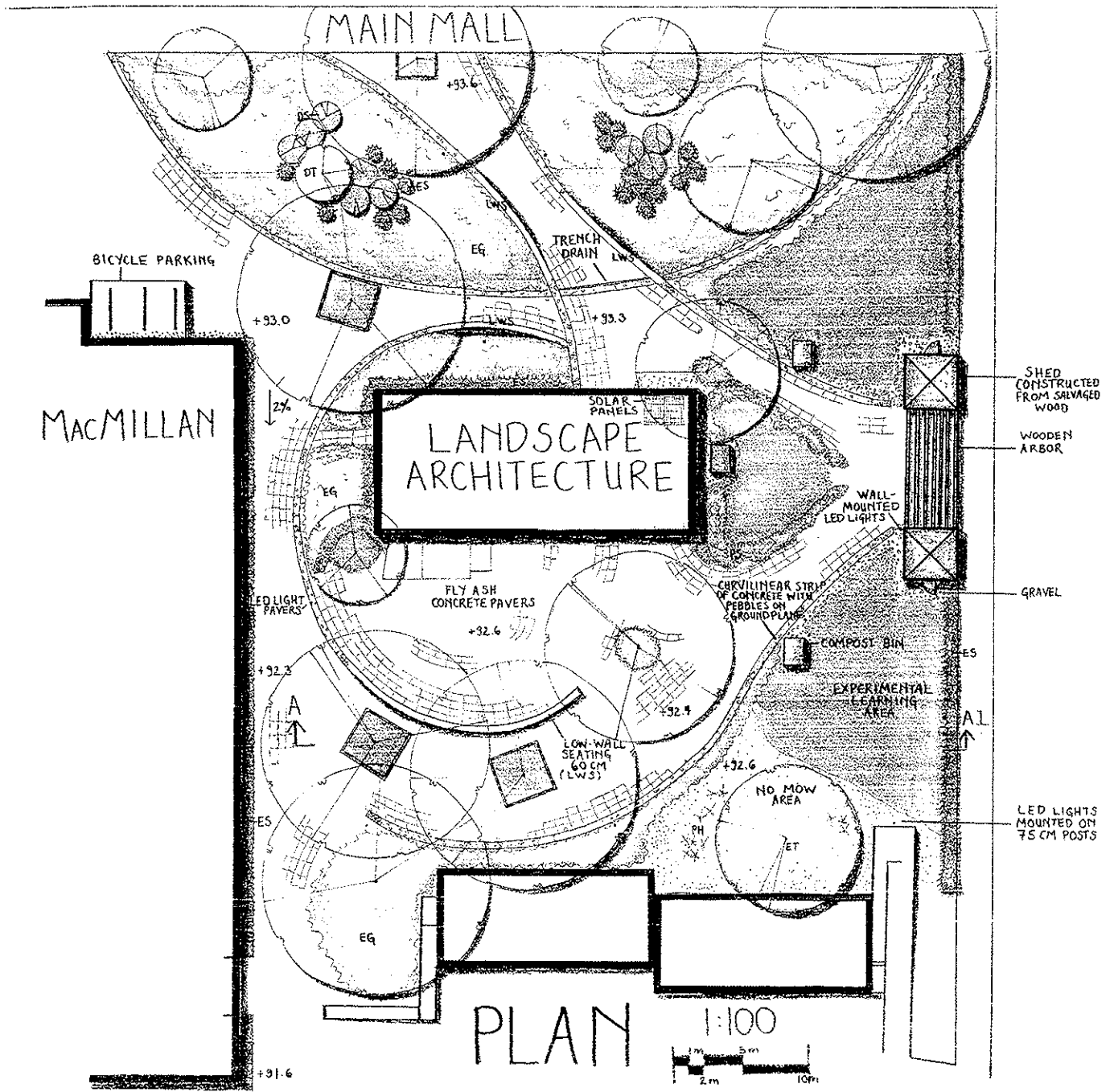
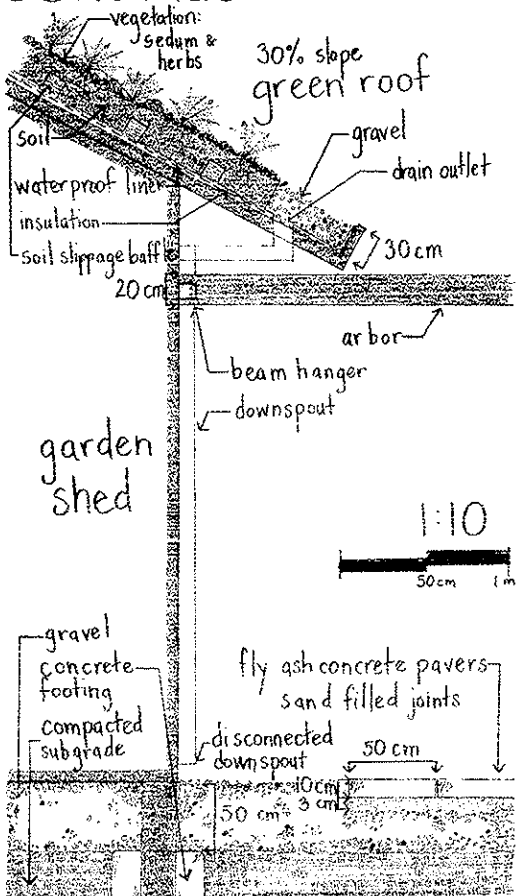
CAGED WATER

LISA PARKER
MAC MILLAN BUILDING PROJECT
LARC 502-GARDEN STUDIO
FEBRUARY 21, 2005

PLANT KEY

SYMBOL	BOTANICAL NAME	COMMON NAME
DT	<i>Acer rubrum</i> <i>Fagus sylvatica</i> <i>Fraxinus ornus</i> <i>Liriodendron tulipifera</i>	red maple European beech flowering ash tulip tree
ET	<i>Arbutus menziesii</i>	arbutus
DS	<i>Ribes sanguineum</i>	red flowering currant
ES	<i>Vaccinium ovatum</i> <i>Vaccinium uliginosum</i>	evergreen huckleberry bog blueberry
PH	<i>Camassia quamash</i> <i>Erythronium oregonum</i>	Common camas white fawn lily
EG	<i>Asarum caudatum</i> <i>Linnaea borealis</i>	wild ginger twin flower
PS	<i>Sedum divergens</i> <i>Sedum integrifolium</i> <i>Sedum spatulifolium</i>	spreading stonecrop rose-roof brood-leaved stonecrop

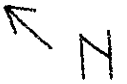
CONSTRUCTION DETAIL



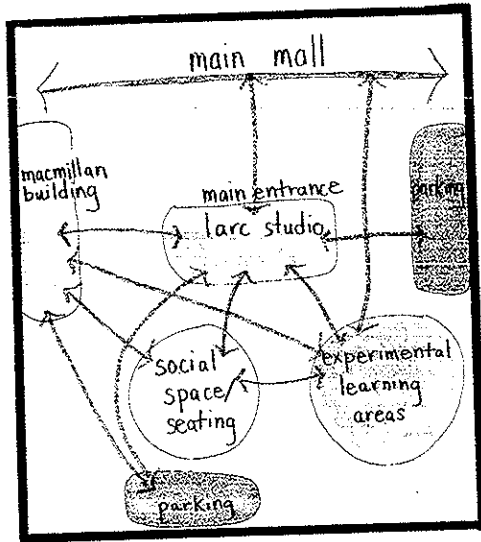
EXPERIMENTAL LEARNING

ERIN UPTON

GARDEN STUDIO
LARC 502
WINTER 2005
SHEET
1 OF 2

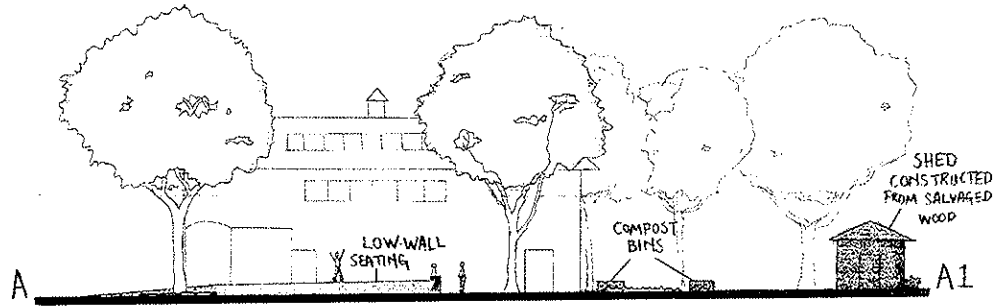


SPATIAL ADJACENCY



SECTION

1:100



MATERIALS

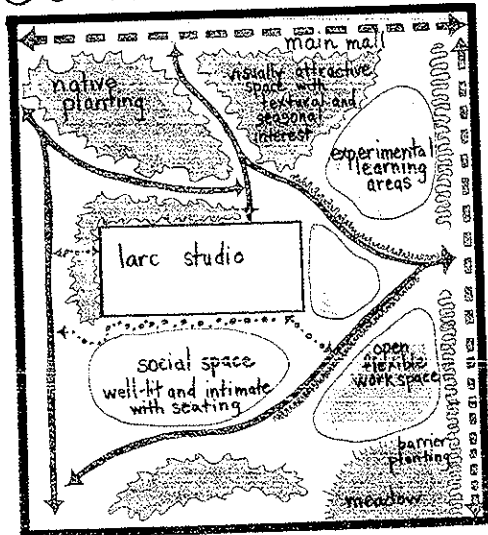
LOW WALL SEATING PRECEDENTS



GREEN ROOF SHEDS ARE CONSTRUCTED FROM SALVAGED WOOD



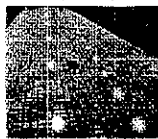
CONCEPT DIAGRAM



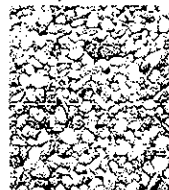
POST-MOUNTED LED LIGHTS



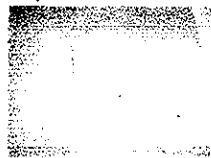
LED LIGHT PAVERS



GRAVEL



FLY-ASH CONCRETE



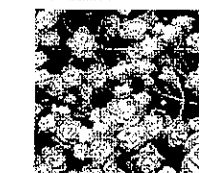
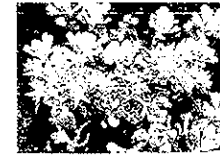
TWIN FLOWER



WILD GINGER



STONECROP



INDIAN PLUM



RED FLOWERING CURRENT



WHITE FAWN LILY



COMMON CAMAS

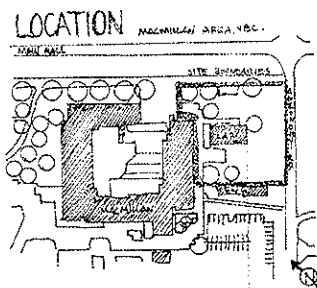


EXPERIMENTAL LEARNING | ERIN UPTON

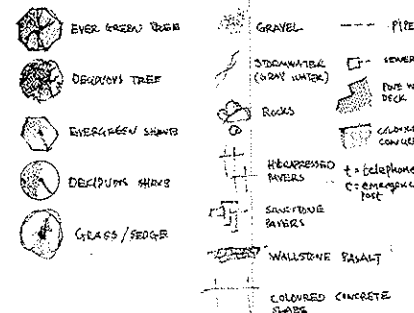
GARDEN STUDIO
LARC 502
WINTER 2005
SHEET
2 of 2

garden studio cropmarks

Plan



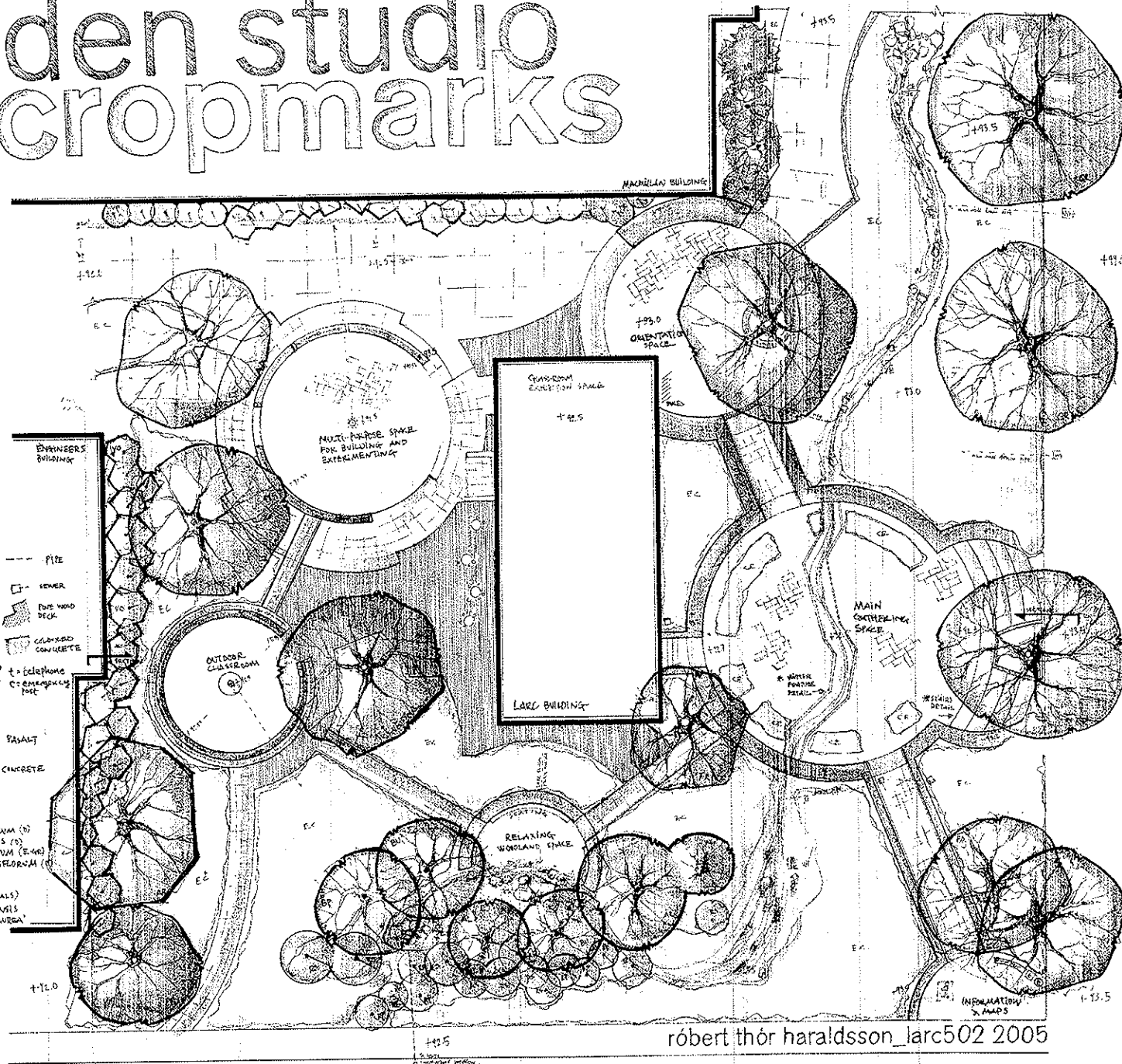
LEGEND



PLANTLIST

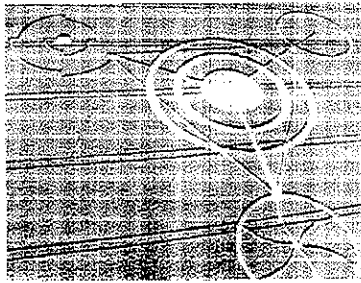
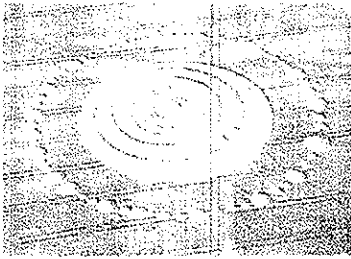
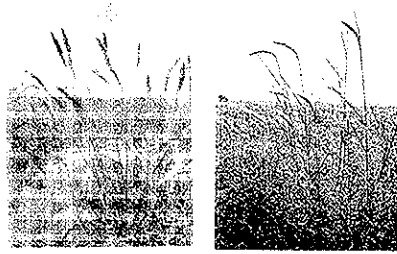
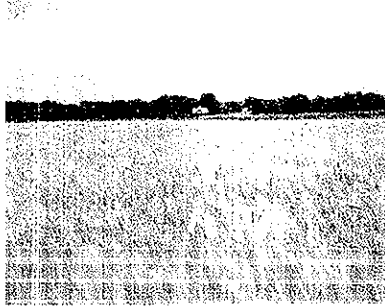
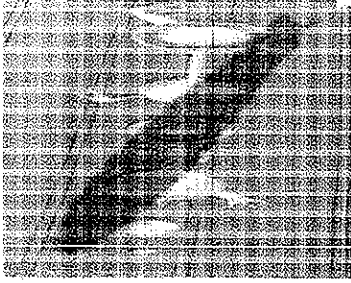
- TREES:**
PER-SCHEING:
 A1 - ARBUTUS MENZIESII (E40)
 A2 - ARBUTUS (E)
 A3 - ACER RUBRUM (O)
 FA - FAGUS SYLVATICA (O)
 FS - FRAXINUS ORNATA (O)
 L2 - LIQUIDAMBON TRILOBIATA (O)
 TS - TAXUS HEMISPH. (O)
 Q1 - QUERCUS IMBRICATA (O)
 Q2 - QUERCUS ALBIFLORA (O)
 Q3 - QUERCUS RUBRA (O)
PROPAGATED:
 AL - ALNUS RUBRA (O)
 BU - BETULA PAPYRIFERA (O)
 BU - BETULA VULGARIS (O)

- SHRUBS:**
PER-SCHEING:
 RP - RIBES PARVIFLORUM (O)
 RS - RIBES SPECIOSUM (O)
 VO - VACCINIUM OXYCOCUM (E40)
 VP - VACCINIUM PARVIFLORUM (O)
GRASS / SEDGE:
 P1 - PANDANUS (PERENNIALS)
 E2 - ELYMUS CANADENSIS
 CE - CAREX ELATA 'AUREA'
 ZE - ZIZANIUM CAPRISUM
 E40 - EVERGREEN
 O = ORNAMENTAL

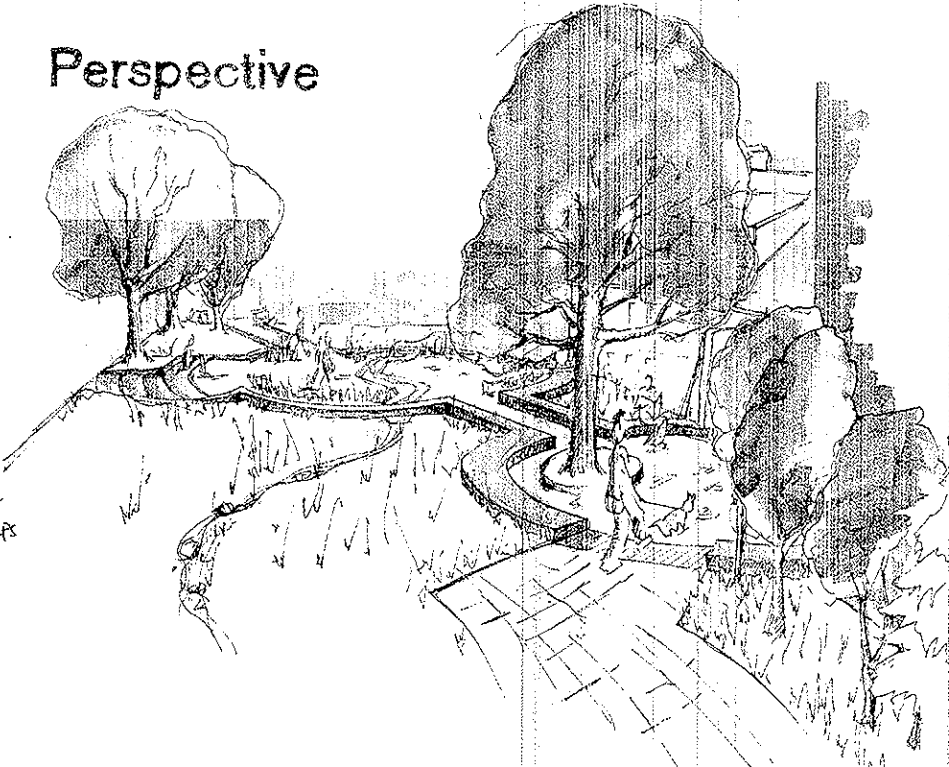
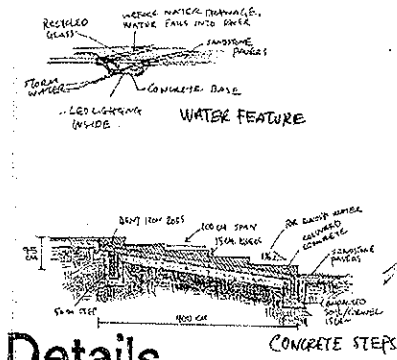


róbert thór haraldsson_larc502 2005

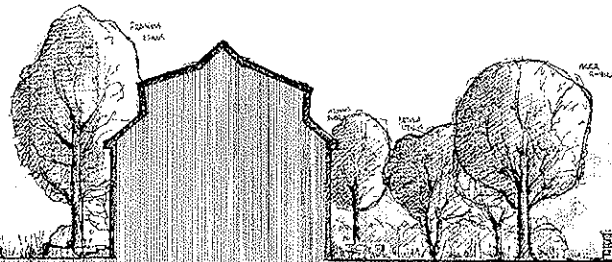
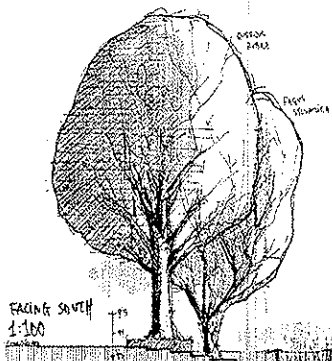




Perspective



Details



FACING SOUTH
1-100

Section